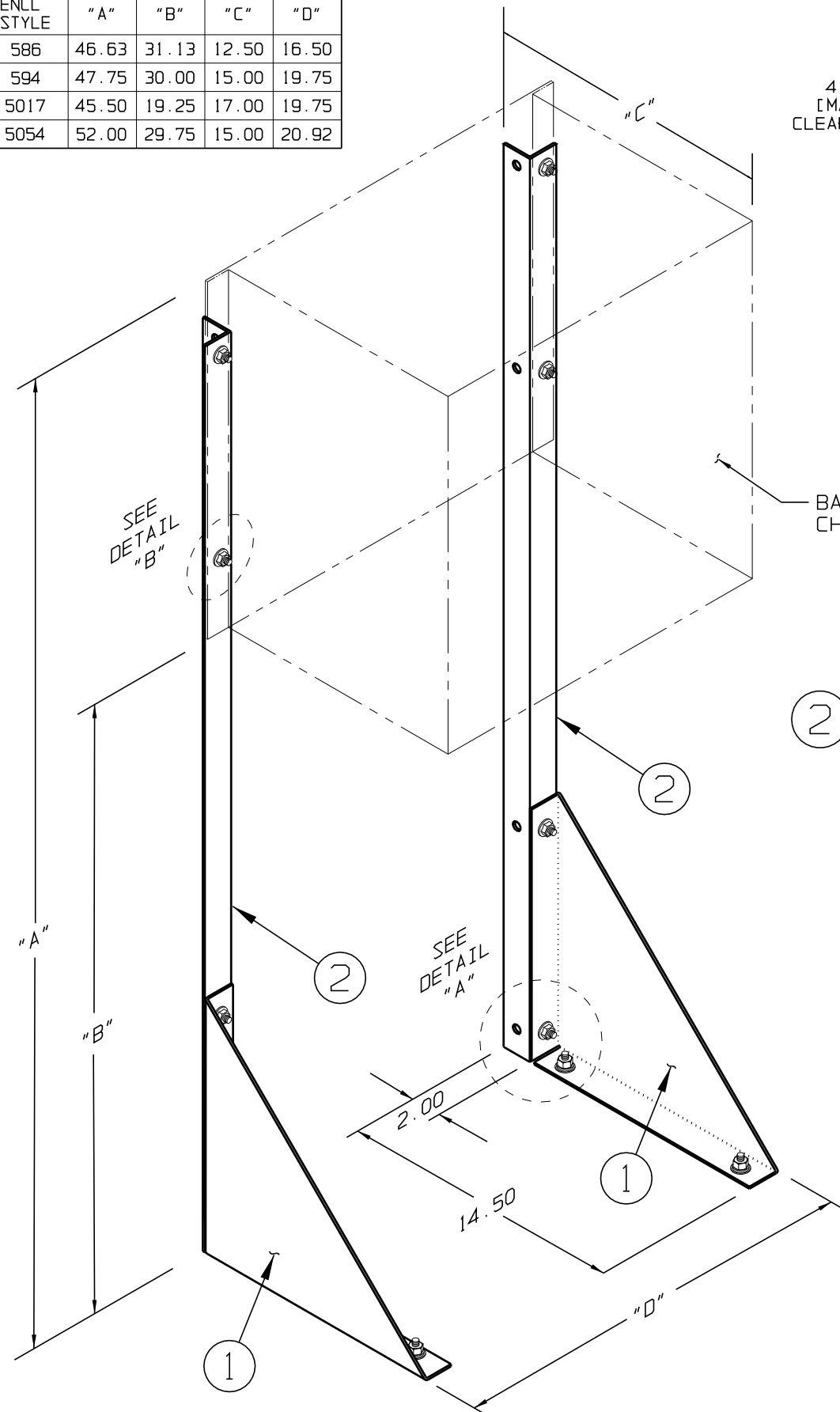
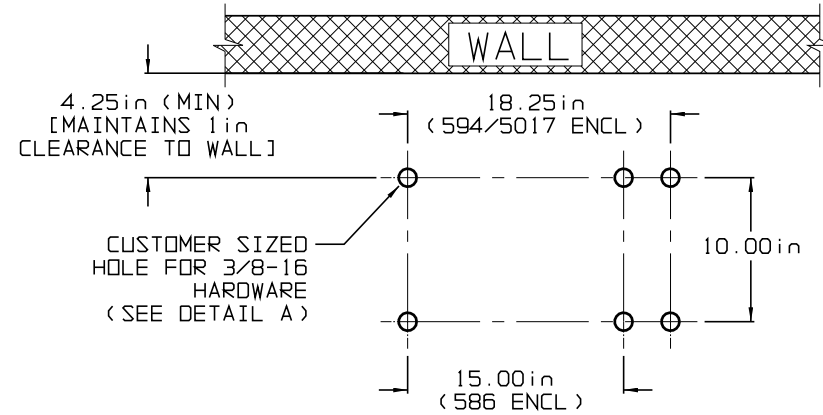


OUTLINE DIMENSIONS

ENCL STYLE	"A"	"B"	"C"	"D"
586	46.63	31.13	12.50	16.50
594	47.75	30.00	15.00	19.75
5017	45.50	19.25	17.00	19.75
5054	52.00	29.75	15.00	20.92



DRILLING TEMPLATE



RECOMMENDED PROCEDURE

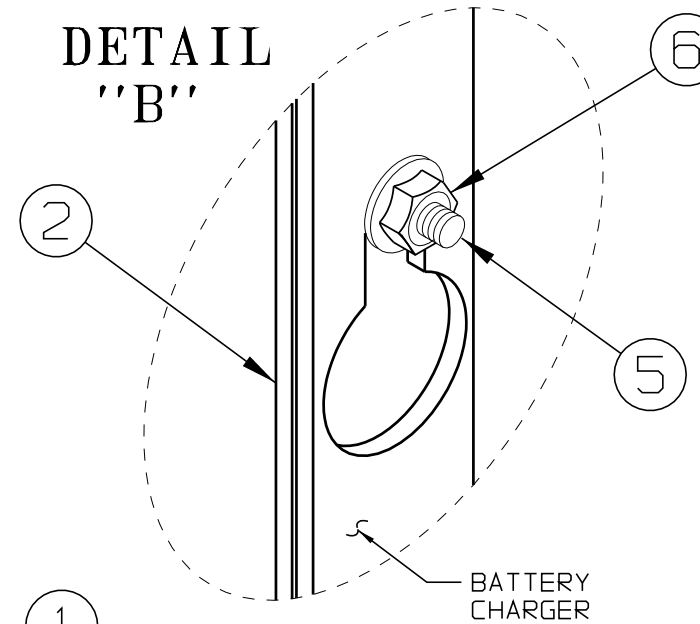
- 1) CREATE LEFT AND RIGHT SUB-ASSEMBLIES BY MOUNTING ITEM 1 TO ITEM 2 WITH INCLUDED HARDWARE, SEE PICTORIAL VIEW AND DETAIL "A"
- 2) MOUNT SUB-ASSEMBLIES (FROM STEP 1) TO MOUNTING SURFACE WITH USER SUPPLIED HARDWARE (NOT INCLUDED), SEE DRILLING TEMPLATE AT LEFT AND DETAIL "A"
- 3) MOUNT BATTERY CHARGER TO ASSEMBLY USING SUPPLIED HARDWARE AS SHOWN, SEE PICTORIAL VIEW AND DETAIL "B"

TORQUE SPECIFICATIONS

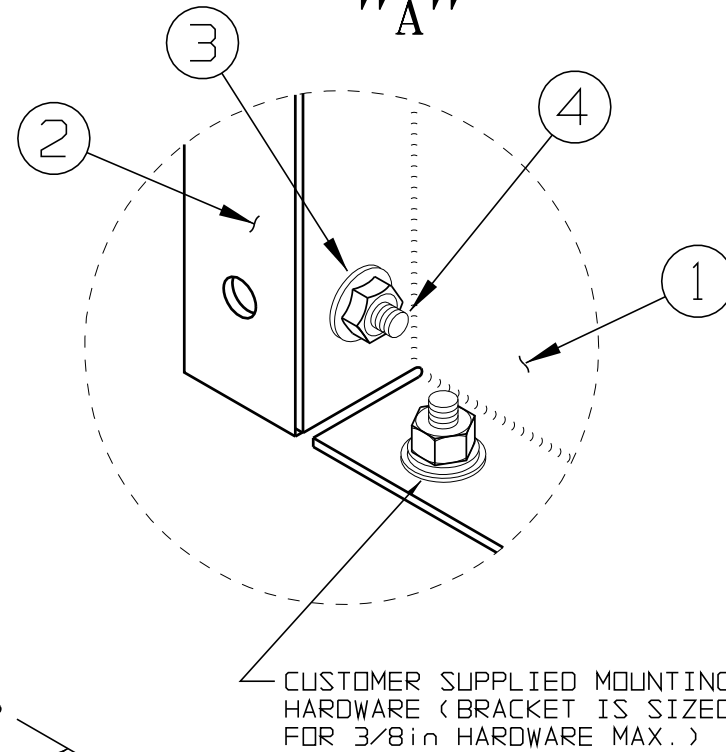
BOLT SIZE	TORQUE RANGE
8	10-15
10	16-24
1/4	57-77
5/16	119-158
3/8	17-23 (*)
1/2	43-57 (*)

ALL TORQUE RANGES ARE IN in-lb EXCEPT AS NOTED (*) RATED IN ft-lb

DETAIL "B"



DETAIL "A"



BILL OF MATERIAL: EI0192-00

ITEM NUMBER	PART No.	DESCRIPTION	QUANTITY PER ASSY
①	FC0608-00	BKT, FLOOR-MOUNTING-BASE, AT10	2
②	FC0611-00	BKT, FLOOR-MTG-ANGLE, AT10	2
③	PE0269-09	NUT, ZPS, 3/8-16, SERRATED-FLANGE	4
④	PE0027-04	SCW, ZPS, HHTB, 3/8-16X1.00	4
⑤	PE0025-02	SCW, ZPS, HHTB, 1/4-20X0.75	4
⑥	PE0269-07	NUT, ZPS, 1/4-20, SERRATED-FLANGE	4
-	JA0083-00	CUSTOMER INSTRUCTIONS	1

4	21594	040209	ND	THIRD ANGLE PROJECTION	TITLE AT10.1 / ATevo SERIES FLOOR-MTG BRACKET CUSTOMER INSTALLATION INSTRUCTIONS
3	E1405	092603	WAH		
2	9896	051893	N/A	DRAWN BY Pac	040692
1	9736	041393	WAH	APPROVED WAH	040792
0	8696	040692	WAH	UNLESS OTHERWISE NOTED DIMENSIONS ARE IN INCHES. TOLERANCES ARE:	
REV	ECN No	DATE	APP	DRAWING No JA0083-00 REV 4A B	
				SCALE NTS	PART No JA0083-00 SHEET 1 OF 1