

TYPE II - INSTRUCTIONS FOR FIELD INSTALLATION AND/OR REPLACEMENT OF THE BATTERY ELIMINATOR FILTER ASSEMBLY (A8)

THESE INSTRUCTIONS ARE APPLICABLE FOR INSTALLING AND/OR REPLACING THE BATTERY ELIMINATOR FILTER ASSEMBLY A8, FOR ANY AT10 SERIES BATTERY CHARGERS WITH OPTION EJ1155-02.  
(MODELS 130VDC WITH OUTPUT CURRENT OF 12A, 16A, 20A AND 25A)

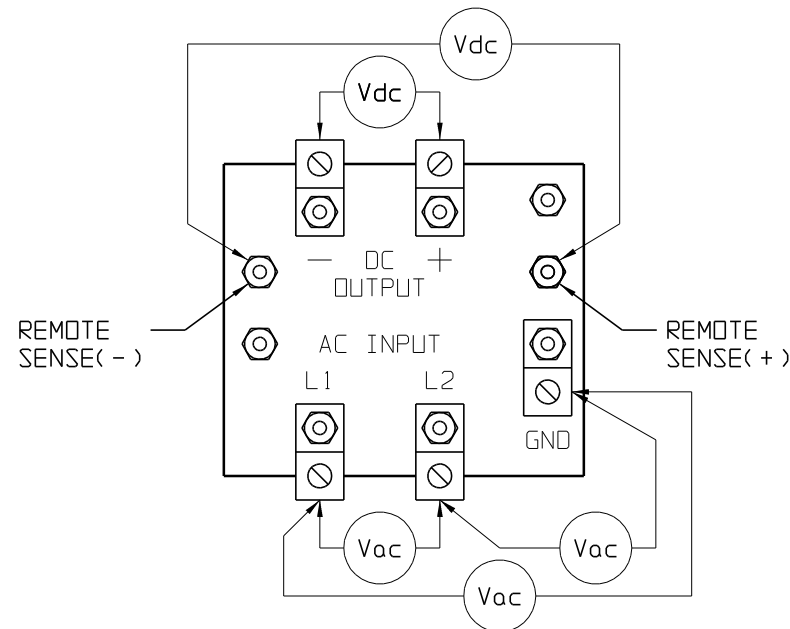
**WARNING**

DISCONNECT AND LOCK OUT ALL POWER TO THE BATTERY CHARGER BEFORE STARTING ANY MAINTENANCE PROCEDURES. TURN THE AC POWER OFF AT THE DISTRIBUTION PANEL UPSTREAM FROM THE BATTERY CHARGER. DISCONNECT THE BATTERY FROM THE CHARGER OUTPUT TERMINALS. THIS INCLUDES REMOTE SENSE WIRES IF THEY WERE INSTALLED.

STEP 1. UPON OPENING THE PACKAGE, PLEASE INSPECT AND CHECK THE FOLLOWING ITEMS:

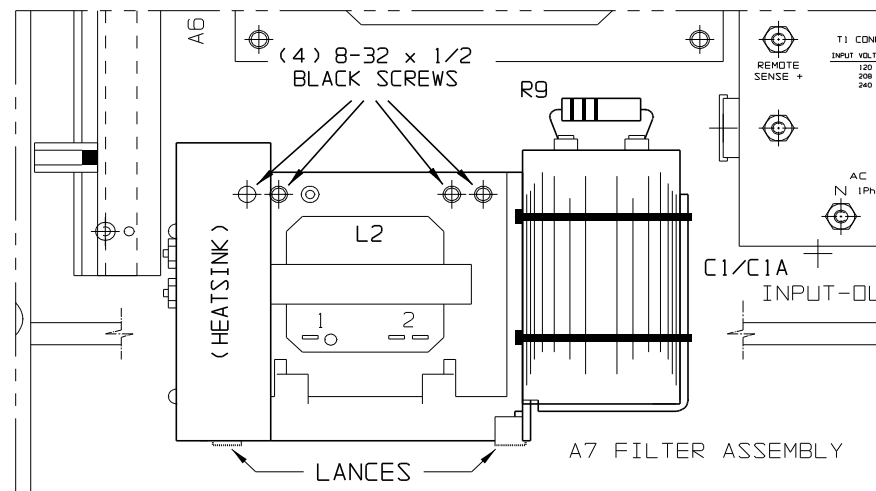
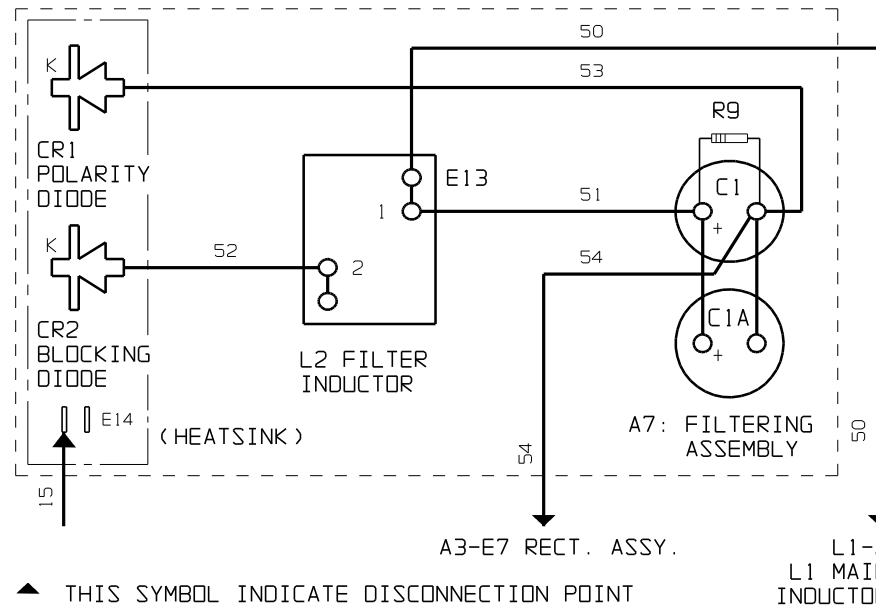
- EH0743-00 WIRE HARNESS AT10 ELIMINATOR, (1).
- PD0012-05 INSULATION KRAFT PAPER .01" (1).
- PE0033-08 8-32 x .75 ZINC PLATED SCREW (1).
- PE0068-01 CAP MOUNTING BRACKET 2.5" DIA. (1).
- PE0269-04 8-32 ZINC PLATED NUT (3).
- PE0291-01 8-32 x .50 TYPE-F BLACK SCREWS (3).
- RP0019-08 CAP ELECTROLYTIC 7400uFD 200VDC, (1).

STEP 2. READ "WARNING" ABOVE. PERFORM ALL INSTRUCTIONS AS DESCRIBED. REMOVE SAFETY COVER. USING A VOLTMETER, VERIFY THAT ALL POTENTIAL VOLTAGES ON THE I/O PANEL ARE ZERO.



STEP 3. REMOVE THE DC FILTER ASSEMBLY A7 FROM THE AT10 UNIT BY:

- A) DISCONNECT WIRES #15 FROM E14 (HEATSINK), WIRE #50 FROM L1-2 (L1 INDUCTOR) AND WIRE #54 FROM A3-E7 (RECTIFIER).
- B) REMOVE (4) FOUR 8-32 x .5 BLACK SCREWS FROM FILTER ASSY.
- C) REMOVE FILTER ASSEMBLY BY LIFTING IT OUT OF THE METAL LANCES ON THE CHASSIS, ROTATE CCW AND TAKE IT OUT OF THE UNIT SO THAT THE HEATSINK COMES OUT FIRST.



STEP 4. SET FILTER ON A WORKING TABLE. PREPARE C2 FOR INSTALLATION:

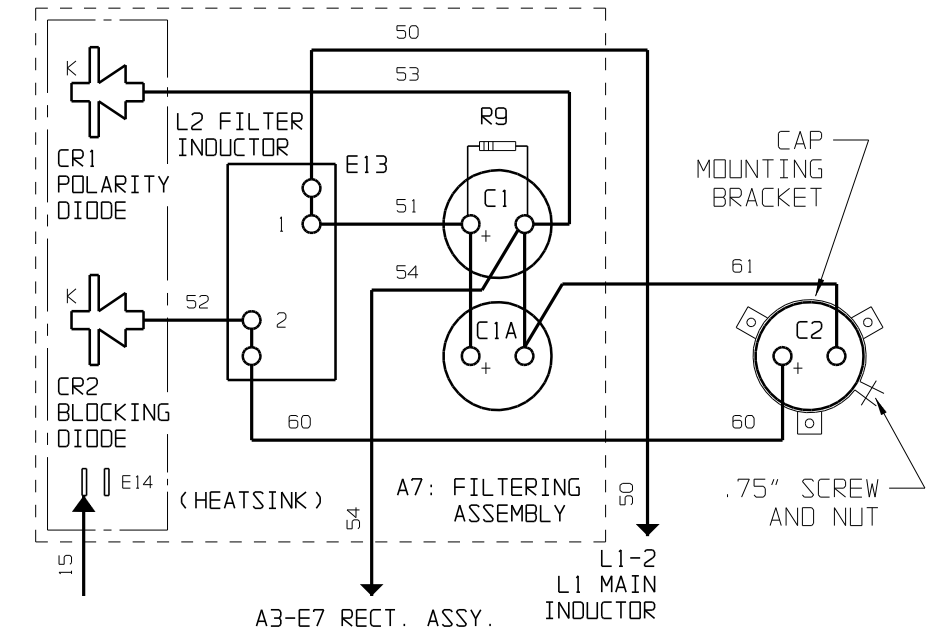
1. WRAP INSULATION KRAFT PAPER AROUND THE CAP NEAR ITS BASE, INSERT CAP INTO MOUNTING BRACKET AND USE .75" SCREW AND NUT TO SECURE, ON A FLAT SURFACE HOLD CAP STANDING UP AND MAKE SURE THAT CAP MOUNTING BRACKET FEET ARE FLAT WITH THE SURFACE, ONCE THIS IS DONE TIGHTEN THE SCREW AROUND THE CAP.
2. POSITION C2 NEAR THE FILTER ASSEMBLY AND WIRE AS SHOWN BELOW. (REF. C1 HAS R9 ACROSS AND C1-A IS THE OTHER ONE).

**SAFETY NOTE !**

CHECK YOUR WORK, READ STEPS AGAIN IF NECESSARY AND MAKE SURE THAT ALL THE INSTRUCTIONS UP TO THIS POINT ARE CORRECT CHECK WIRE CONNECTIONS ON FILTER ASSEMBLY.

**NOTICE:**

AFTER THIS INSTALLATION IS COMPLETE, PLEASE RECORD ON PAGE i OF USER'S MANUAL AND ON NAMEPLATE THAT UNIT NOW HAS THE ELIMINATOR FILTER OPTION.



THIS SYMBOL INDICATE CONNECTION POINT

STEP 5. RE-INSTALL FILTER ELIMINATOR ASSY AND C2 INTO THE CHARGER. ONCE IN POSITION SLIP THE TWO LOWER CORNERS OF FILTER ASSY. UNDERNEATH THE LANCES INTO THE CHASSIS. ALONG THE FOUR HOLES IN THE CHASSIS, INSERT FOUR 8-32 x .5 BLACK SCREWS IN THESE HOLES AND TIGHTEN TO 10-15 IN-LBS TORQUE.

ALIGN THE HOLES IN THE CAP MTG. BKT. WITH THE THREE HOLES IN THE CHASSIS BELOW I/O PANEL, SECURE C2 WITH 8-32 x .5 TYPE-F BLACK SCREW. THESE ARE THREAD CUTTING SCREWS.

STEP 6. RE-CONNECT WIRE #15 TO E14 (HEATSINK), WIRE #50 TO L1-2 INDUCTOR AND WIRE #54 TO A3-E7 RECTIFIER ASSY.

**SAFETY NOTE !**

CHECK YOUR WORK, MAKE SURE THAT NO OTHER WIRES WERE DISCONNECTED ACCIDENTLY, (REFER TO WIRING DIAGRAM IN APPENDIX C OF USER'S MANUAL) DURING THIS PROCESS.

STEP 7. REPLACE SAFETY SHIELD. CLOSE DOOR AND PROCEED TO RE-ENERGIZE THE AT10 PER START-UP INSTRUCTIONS ACCORDING WITH THE AT10 USER'S MANUAL.

STEP 8. TO VERIFY PROPER OPERATION OF AT10 FILTER ELIMINATOR OPTION, TEST AS FOLLO:

1. ENERGIZE AT10 WITH A NOMINAL RESISTIVE LOAD OF ROUGHLY 50% RATED OUTPUT CURRENT. (DO NOT HAVE BATTERY CONNECTED AT THIS TIME).
2. CONNECT AN AC RMS-RESPONDING VOLTMETER, SET ON AC MILLI-VOLTS SCALE ACROSS THE OUTPUT OF THE AT10.

CAUTION ! BE CAREFUL OF ELECTRICAL SHOCK.

3. MAXIMUM AC RIPPLE SHOULD NOT EXCEED 30 mV rms, IF MORE THAN 30 mV rms ARE MEASURED, RE-CHECK YOUR WORK. IF THE PROBLEM PERSISTS, CALL THE FACTORY FOR ASSISTANCE.

				THIRD ANGLE PROJECTION			
				DRAWN BY	091894	TITLE AT10.1 (GROUP I) CUSTOMER INSTRUCTIONS: FIELD INSTALL OF BATT ELIM FILT ASSY (A8) - TYPE II	
				APPROVED	SGS	091994	DRAWING No
				UNLESS OTHERWISE NOTED DIMENSIONS ARE IN INCHES. TOLERANCES ARE:		JA0110-01	
REV	ECN No	DATE	APP			SCALE	NTS
1	12292	080995	WAH			PART No	JA0110-01
0	11317	091994	SGS			SHEET	1 OF 1