

THESE INSTRUCTIONS ARE APPLICABLE FOR INSTALLING AND/OR REPLACING THE AUXILIARY RELAY ALARM CARD (A5) FOR ANY AT10.1 SERIES (GROUP I) BATTERY CHARGER RATED 6-25A OUTPUT

WARNING

DISCONNECT AND LOCK OUT ALL POWER TO THE BATTERY CHARGER BEFORE STARTING ANY MAINTENANCE PROCEDURES. TURN OFF THE CHARGER'S INTERNAL AC AND DC CIRCUIT BREAKERS. TURN OFF ALL AC POWER UPSTREAM FROM THE BATTERY CHARGER. DISCONNECT THE BATTERY FROM THE CHARGER OUTPUT TERMINALS. THIS INCLUDES REMOTE SENSE WIRES CONNECTED TO THE BATTERY IF THEY WERE INSTALLED.

STEP 1) UPON OPENING THE PACKAGE, PLEASE INSPECT AND CHECK FOR THE FOLLOWING ITEMS:

- (1) EN0027-00 AUXILIARY ALARM RELAY PC BOARD (A5)
- (1) EH5045-00 SERIAL INTERCONNECTION CABLE ASSEMBLY
- (4) PE0243-00 PC BOARD STAND-OFF 0.5in LONG
- (4) PE0032-02 SELF-TAPPING SCREWS 6-32x0.25
- (2) PE0165-11 RUBBER GROMMET (W/SPARE) TO FIT 1.375in HOLE *
- (6) PE0082-01 PLASTIC WIRE TIE 4in LONG
- (1) FE0599-00 AT10.1 PENTHOUSE SHROUD *
- (1) FE0600-00 AT10.1 PENTHOUSE TOP *
- (1) FE0601-00 AT10.1 PENTHOUSE BLANK PANEL *
- (14) PE0291-01 SELF-TAPPING SCREWS 8-32x0.5 TYPE-F *
- (2) PE0269-04 8-32 HEX NUT (FASTENED FROM BOTTOM) *

NOTE: (*) IF YOUR AT10.1 ALREADY HAS A PENTHOUSE INSTALLED, THESE ITEMS WILL NOT BE SUPPLIED IN YOUR PACKAGE.

IF YOUR AT10.1 ALREADY HAS A PENTHOUSE INSTALLED, STEP 6 HAS BEEN PERFORMED DURING INITIAL MANUFACTURING.

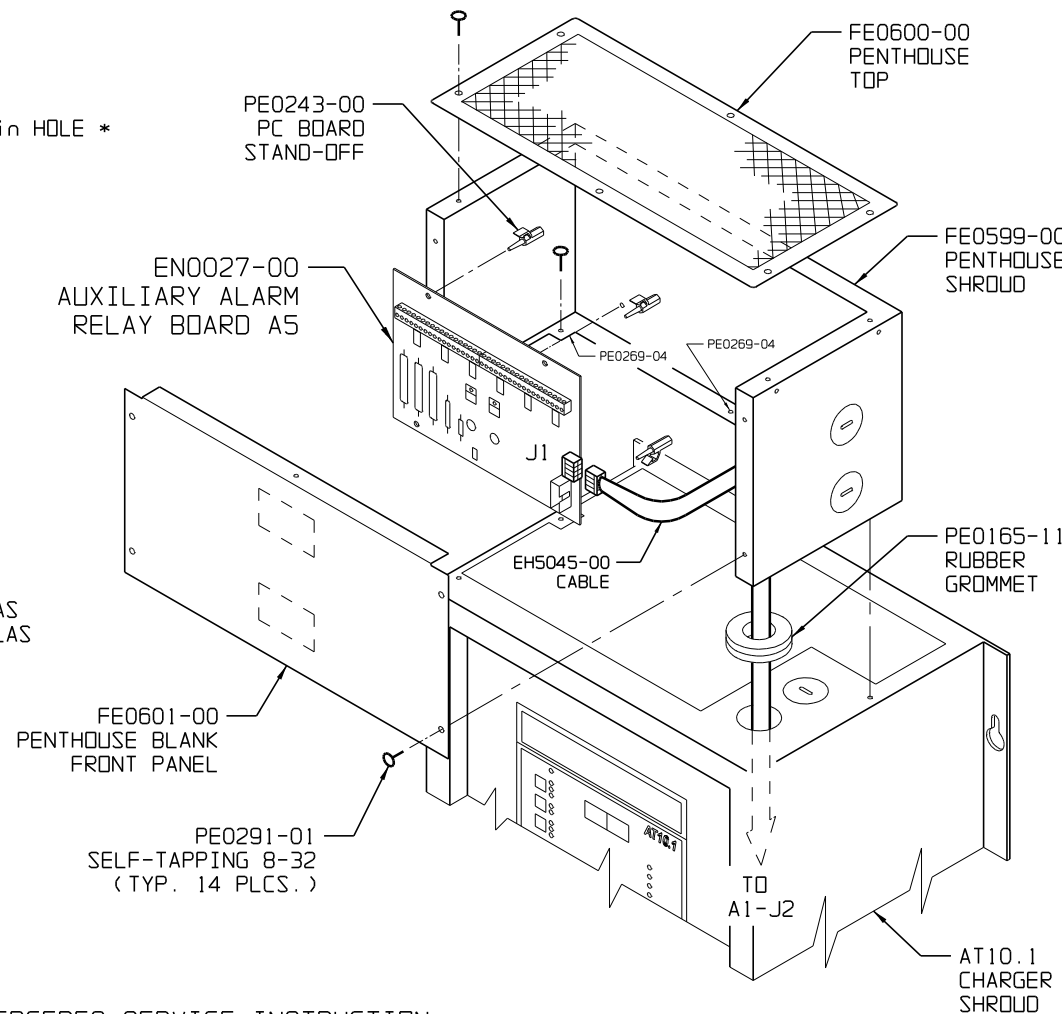
STEP 2) READ THE "WARNING" NOTE ABOVE AND PERFORM ALL INSTRUCTIONS AS DESCRIBED. REMOVE THE PLEXIGLAS SAFETY SHIELD.

USING A VOLTMETER, VERIFY THAT ALL POTENTIAL VOLTAGES ON THE I/O PANEL ARE ZERO.

COMPATABILITY NOTE:

THIS DOCUMENT SUPERCEDES SERVICE INSTRUCTION JA0090-00 (<http://www.ATSeries.net/PDFs/JA0090-00.pdf>). IF YOUR AT10.1 WAS MANUFACTURED BEFORE 02/08/2008 AND THE AUXILIARY ALARM RELAY PC BOARD (A5) FIELD INSTALLATION KIT DOES NOT ALSO CONTAIN AN UPGRADED MAIN CONTROL PC BOARD (A1), THESE INSTRUCTIONS MAY NOT APPLY TO YOUR UNIT. OLDER (REV. 7 OR LOWER) VERSIONS OF THE MAIN CTRL PC BOARD DO NOT FEATURE PLUG J2 AS SHOWN. PLEASE CONTACT YOUR SALES REPRESENTATIVE FOR AN UPGRADED (REV. 8 OR HIGHER) VERSION OF THIS PART.

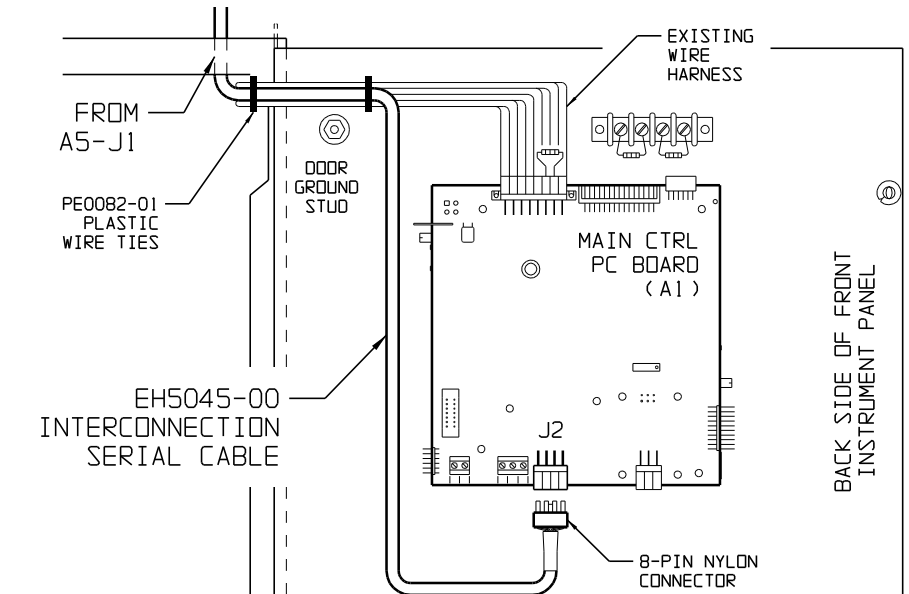
- STEP 3) IF YOUR CHARGER HAS A PENTHOUSE INSTALLED, REMOVE THE TOP AND FRONT PANELS. CAREFULLY LET THE FRONT PANEL HANG FROM THE WIRES CONNECTED TO TERMINAL BLOCKS.
- STEP 4) MOUNT THE PE0243-00 PC BOARD STAND-OFFS TO THE FE0599-00 PENTHOUSE SHROUD USING PE0032-02 SELF-TAPPING 6-32x0.25in SCREWS. CHECK ORIENTATION OF THE STAND-OFFS RELATIVE TO THE PC BOARD EDGES BEFORE TIGHTENING THE SCREWS.
- STEP 5) ON THE TOP OF THE AT10.1, OPEN ONE OF THE TOP KNOCKOUT HOLES. INSTALL A PE0165-11 RUBBER GROMMET ONTO THE OPEN HOLE. IF YOUR AT10.1 HAS A PENTHOUSE INSTALLED, USE THE UNUSED KNOCKOUT HOLE AND INSTALL THE SUPPLIED RUBBER GROMMET.
- STEP 6) MOUNT THE PENTHOUSE ASSEMBLY ON TOP OF THE AT10.1 AS SHOWN. MAKE SURE THE HOLES ALIGN BETWEEN THE BOTTOM OF THE PENTHOUSE AND THE TOP OF THE AT10.1. THE BOTTOM OF PENTHOUSE IS IDENTIFIED BY A NOTCH ON ONE SIDE. SECURE THE PENTHOUSE USING FOUR (4) PE0291-01 SELF-TAPPING 8-32x0.5in SCREWS.



STEP 7) REMOVE PC BOARD FROM ITS ANTI-STATIC CARRIER PLATIC BAG. VERIFY THE JUMPER SETTING OF J7 ON A5 MATCH THE DC OUTPUT VOLTAGE OF YOUR BATTERY CHARGER. !!!-VERY IMPORTANT-!!!

ALWAYS HANDLE PC BOARD BY THEIR EDGES. CHECK FOR PROPER ORIENTATION AND ALIGN THE PC BOARD HOLES WITH THE PLASTIC STAND-OFF GUIDE POSTS. PUSH FIRMLY UNTIL ALL FOUR (4) CLIPS SNAP INTO PLACE, SECURELY HOLDING THE PC BOARD.

STEP 8) INSTALL THE EH5045-00 INTERCONNECTION CABLE. CONNECT ONE END OF THE CABLE TO J1 ON THE A5 AUXILIARY ALARM RELAY PC BOARD AS SHOWN. PASS THE OTHER END OF THE CABLE THROUGH THE RUBBER GROMMET. OPEN THE AT10.1 DOOR AND CONNECT THE OTHER END OF THE CABLE TO J2 ON THE MAIN CONTROL PC BOARD (A1). SECURE THE CABLE ASSEMBLY TO THE EXISTING WIRE HARNESS USING PE0082-01 PLASTIC WIRE TIES.

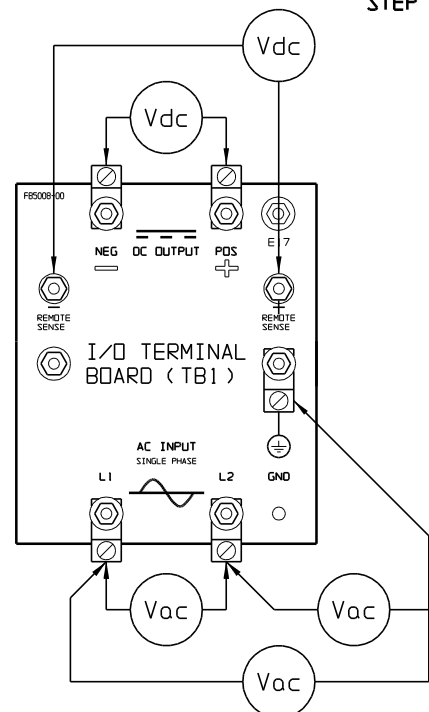


STEP 9) CHECK YOUR WORK! READ ALL STEPS AGAIN TO MAKE SURE ALL INSTRUCTIONS UP TO THIS POINT WERE PERFORMED. PLEASE CHECK THE FOLLOWING:

- ALL STAND-OFF LATCHES ARE PROPERLY HOLDING THE A5 BOARD
- CABLE CONNECTOR AND HOUSING PROPERLY MATED AT BOTH ENDS
- CABLE ASSEMBLY PROPERLY SECURE TO EXISTING WIRE HARNESS
- VERIFY THE JUMPER SETTING OF J7 ON A5 MATCH THE DC OUTPUT VOLTAGE OF YOUR AT10.1 !!!-VERY IMPORTANT-!!!

STEP 10) INSTALL FRONT AND TOP PANELS OF THE PENTHOUSE USING THE REMAINING SELF-TAPPING SCREWS 8-32 x 0.5in (THE SHORT BEND ON THE FRONT PANEL INDICATES THE TOP).

STEP 11) REPLACE THE PLEXIGLAS SAFETY SHIELD AND CLOSE THE FRONT PANEL DOOR. REFER TO THE AT10.1 OPERATING AND SERVICE INSTRUCTIONS TO RE-ENERGIZE THE UNIT, AND FOR USE OF THE NEWLY INSTALLED AUXILIARY ALARM RELAY PC BOARD (A5).



				THIRD ANGLE PROJECTION			
				DRAWN BY	MCR	080309	
				APPROVED	ND	080309	
1	24562	100214	ND	UNLESS OTHERWISE NOTED DIMENSIONS ARE IN INCHES. TOLERANCES ARE:			
0	21729	080309	ND				
REV	ECN No	DATE	APP	TITLE		AT10.1 (GRP I) FIELD INSTALLATION INSTRUCTIONS AUXILIARY ALARM RELAY PC BOARD (A5) OPTION	
				DRAWING No		JD5025-00	
				SCALE	NTS	PART No	JD5025-00
				SHEET		1 OF 1	