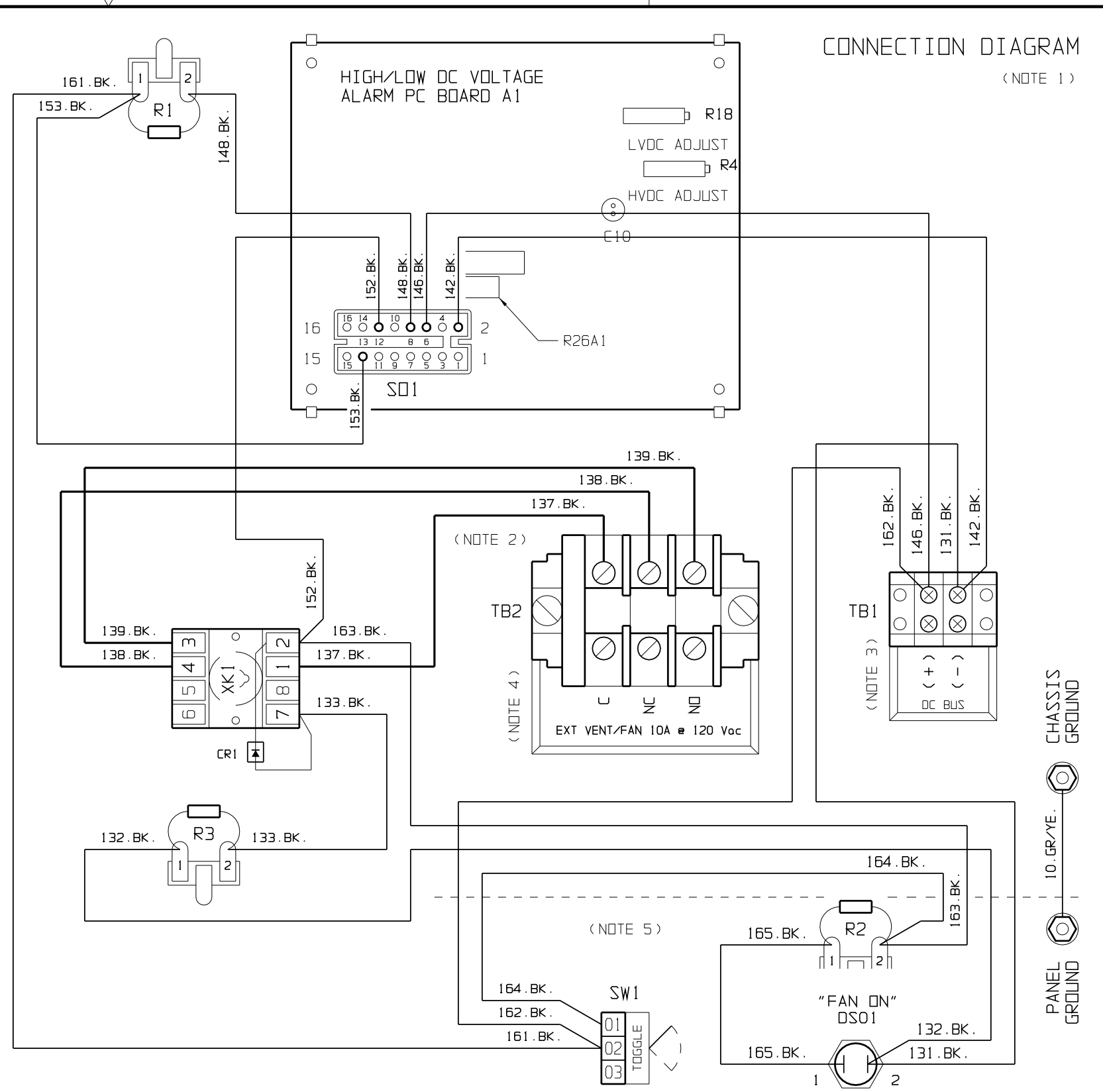


SYM	STANDARD COMPONENT DESCRIPTION
A1	VOLTAGE SENSE CTRL PC BOARD
R4	PCB (A1) HIGH ADJ POTENTIOMETER
R18	PCB (A1) LOW ADJ POTENTIOMETER
R26A1	PCB (A1) VDC RATING RESISTOR
SO1	PCB (A1) WIRING SOCKET
CR1	RELAY (K1) PROTECTION DIODE
DS01	VENT/FAN ON (GREEN) IND LIGHT
K1	POWERED (10A) DPDT RELAY
R1	PCB (A1) P/S BALLAST RESISTOR
R2	IND (DS01) 48V P/S BALLAST RES
R3	EQUALIZE VOLTAGE DROP RESISTOR
SW1	MANUAL (ON/OFF) TOGGLE SWITCH
TB1	DC BUS INPUT TERMINAL BLOCK
TB2	VENT/FAN CONTACT TERMINAL BLOCK

NOTES:

- COMPONENTS ARE CONNECTED WITH FLAME-RETARDANT SWITCHBOARD INSULATION SYSTEM (SIS) TYPE WIRING, IDENTIFIED ON EACH END WITH NUMBER-CODED MARKERS. GROUND WIRES ARE GREEN WITH YELLOW STRIPE.
- POWER WIRES # 137, 138 & 139 ARE #14 AWG ALL OTHER SIGNAL WIRING IS #18 AWG
- TB1 (DC+/-) TERMINAL BLOCK IS MOLDED PHENOLIC BARRIER TYPE WITH 6-32 COMPRESSION SCREWS, ACCEPTING RING OR SPADE LUGS FOR #22-16 AWG WIRE.
- TB2 (VENT/FAN) TERMINAL BLOCK IS NYLON SECTIONAL TYPE WITH TUBULAR COMPRESSION SCREWS, ACCEPTING #18-8 AWG WIRE.
- FRONT-MOUNTED COMPONENTS (DS01, R2, SW1 & GROUND STUD) DEPICTED IN "SERVICE MODE" WITH HINGED PANEL SWUNG OPEN 180°.
- VENT/FAN CONTROL ASSEMBLY IS NOT A UL, CSA, CE, OR NRTL LISTED UNIT.
- SEE JA5052-10 FOR INSTALLATION & OPERATING INSTRUCTIONS.



			THIRD ANGLE PROJECTION					
C	-N/A-	030221	DRAWN BY	MCR	031920	TITLE		EXTERNAL VENT/FAN CTRL ASSY (EJ5017-25) SCHEMATIC / CONN DIAGRAM: 10Aac / 48Vdc
B	-N/A-	102020	ELECTRONIC APPROVAL SIGNATURES MAINTAINED BY MFG ECN LOG			DRAWING No		JE5120-25
A	-N/A-	031920	UNLESS OTHERWISE NOTED DIMENSIONS ARE IN INCHES. TOLERANCES ARE:			REV	C	B
REV	ECN No	DATE	SCALE	NTS	PART No	JE5120-25	SHEET	1 OF 1