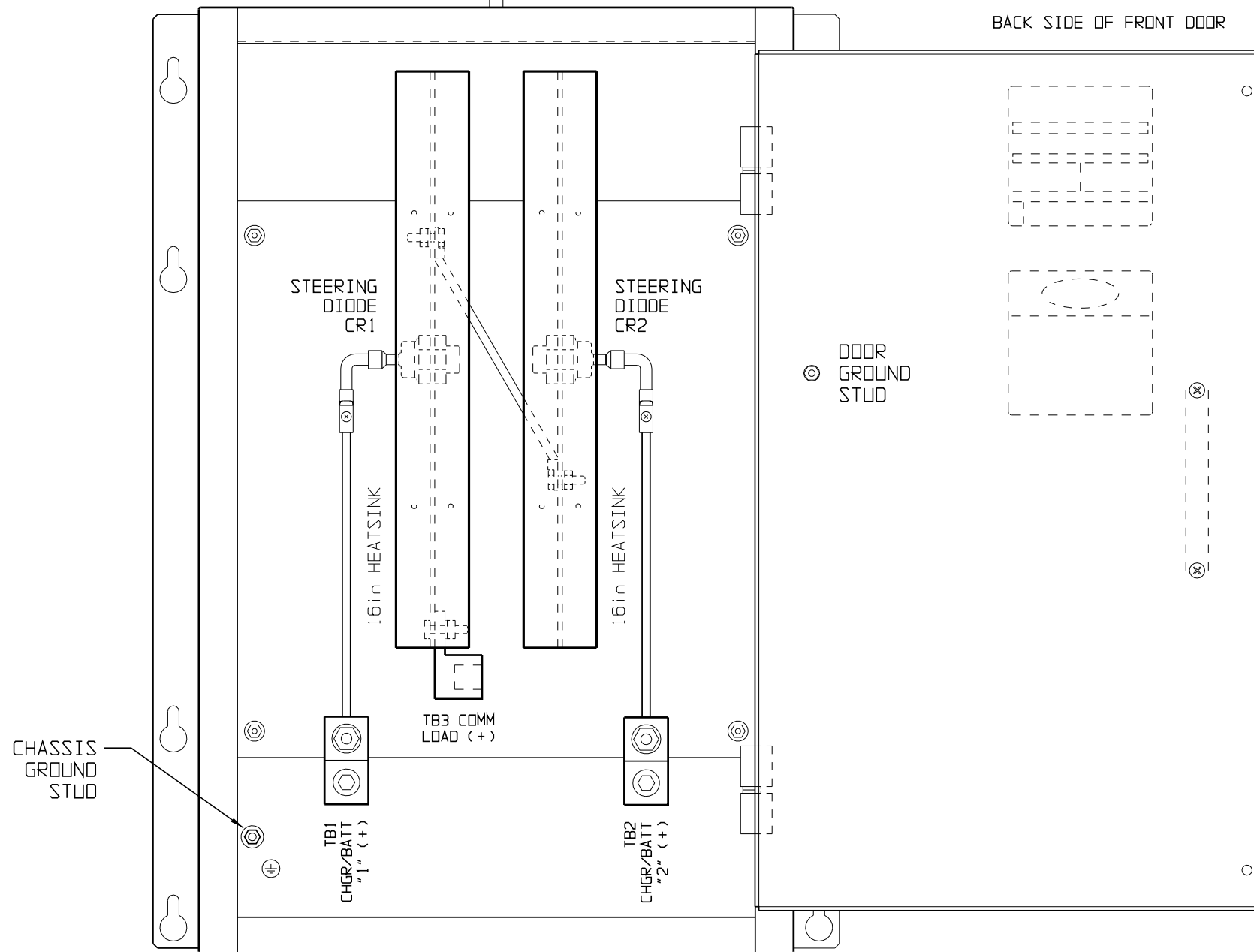


PART No.	VOLTAGE RATING	CURRENT RATING
EJ5144-02	250 VDC	200 ADC
EJ5144-06	600 VDC	200 ADC

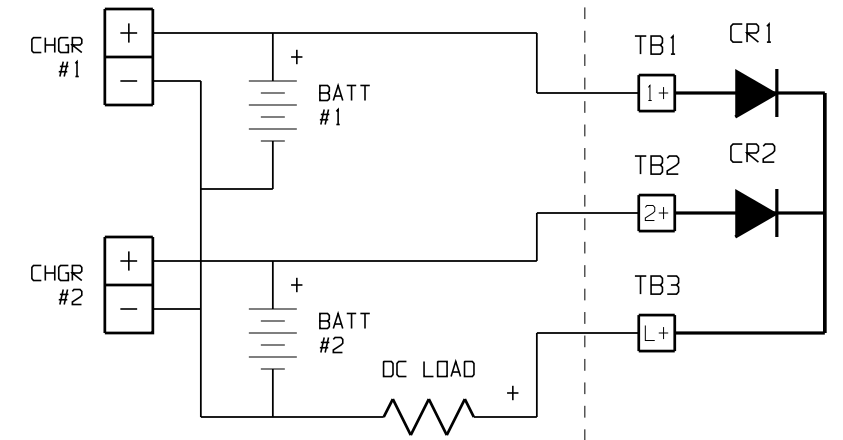
FRONT VIEW

BACK SIDE OF FRONT DOOR



SYSTEM SCHEMATIC

BEST BATTERY SELECTOR



NOTES:

- * STEERING DIODES LINK TWO (2) BATTERY CHARGER DC OUTPUT BUSES TO COMMON LOAD WITHOUT LINKING BATTERY BANKS TOGETHER, SEE OPERATING INSTRUCTIONS (JA5065-00)
- * STEERING DIODES AND I/O TERMINAL (TB#) ARE CONNECTED WITH FLAME-RETARDANT BLACK SWITCHBOARD INSULATION SYSTEM (SIS) TYPE WIRING, IDENTIFIED ON EACH END WITH NUMBER-CODED MARKERS

I/O TERMINAL	DESCRIPTION - TYPE	CONNECTION
TB1	CHGR/BATT #1 INPUT TERMINAL - CU-AL COMPRESSION LUG	ONE (1) #6 AWG-350 MCM
TB2	CHGR/BATT #2 INPUT TERMINAL - CU-AL COMPRESSION LUG	ONE (1) #6 AWG-350 MCM
TB3	COMMON LOAD OUTPUT TERMINAL - CU-AL COMPRESSION LUG	ONE (1) #6 AWG-350 MCM
CHS GND	CHASSIS GROUND - 10-32 ZPS STUD TERMINAL	#10 RING LUG

2	27443	021720	 THIRD ANGLE PROJECTION
1	24772	021815	
0	23733	052813	DRAWN BY MCR 080109
D	N/A	080109	ELECTRONIC APPROVAL SIGNATURES MAINTAINED BY MFG ECN LOG
A-C	-N/A-	-N/A--	UNLESS OTHERWISE NOTED DIMENSIONS ARE IN INCHES. TOLERANCES ARE:
REV	ECN No	DATE	

TITLE BEST BATTERY SELECTOR INTERNAL COMPONENT LAYOUT: STYLE-5017 ENCLOSURE (200Adc)			
DRAWING No JE5139-02		REV 2	B
SCALE NTS	PART No JE5139-02	SHEET 1 OF 1	