

FIGURE 1
25-50A RECTIFIER ASSY
(A16) PM5007-10

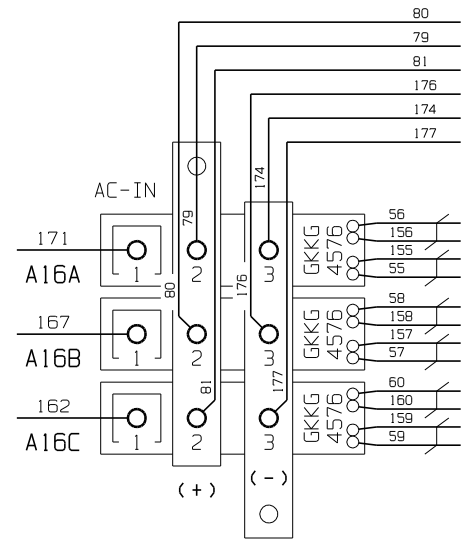


FIGURE 3
75-100A RECTIFIER ASSY
(A16) PM5007-01

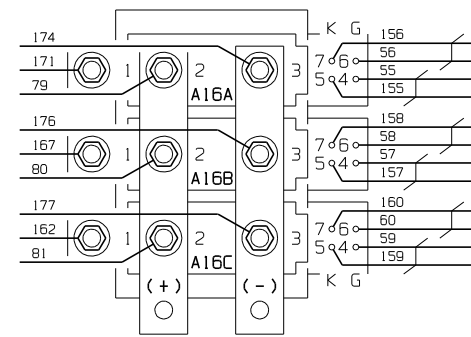


FIGURE 4
125A RECTIFIER ASSY
(A16) PM5007-06

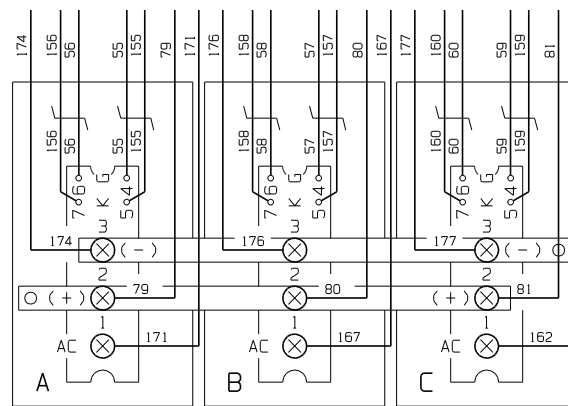


FIGURE 5
150-250A RECTIFIER ASSY
(A16) PM5007-07

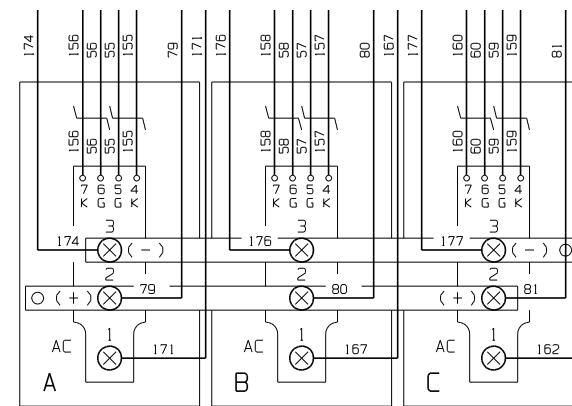


FIGURE 6
300A RECTIFIER ASSY
(A16) PM5007-08

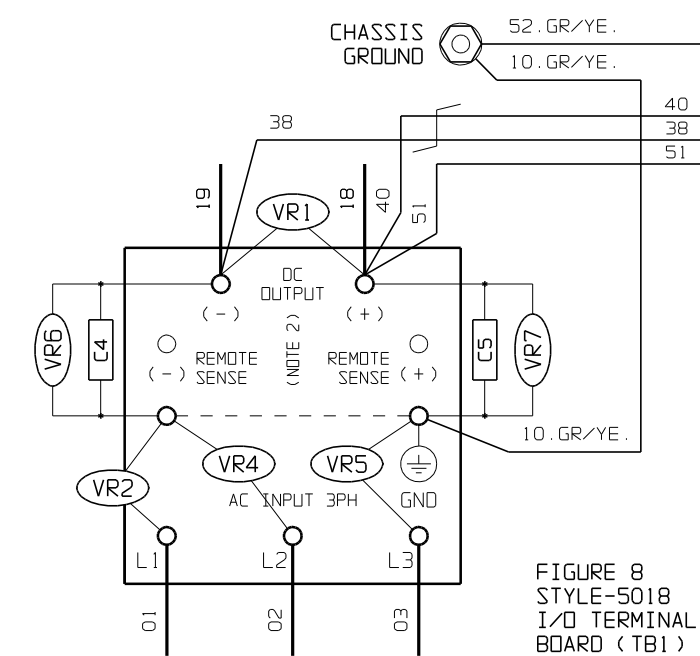
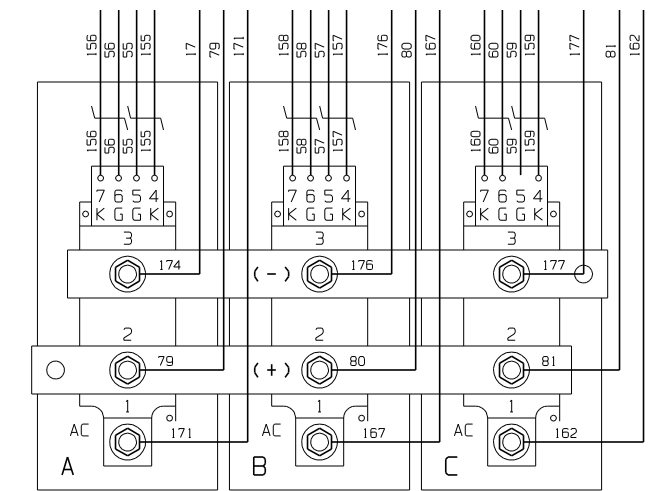


FIGURE 8
STYLE-5018
I/O TERMINAL
BOARD (TB1)

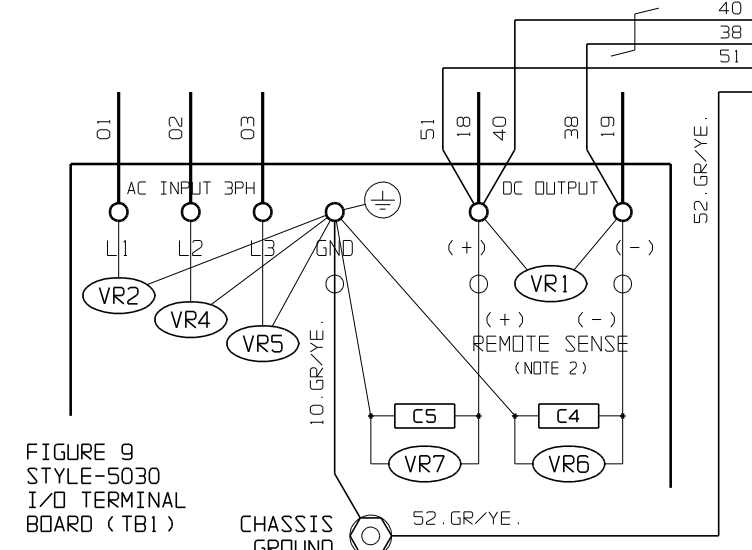


FIGURE 9
STYLE-5030
I/O TERMINAL
BOARD (TB1)

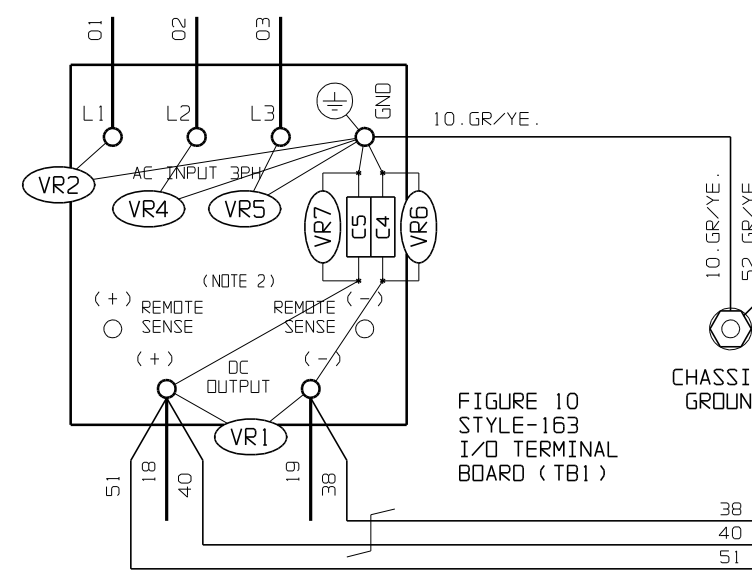
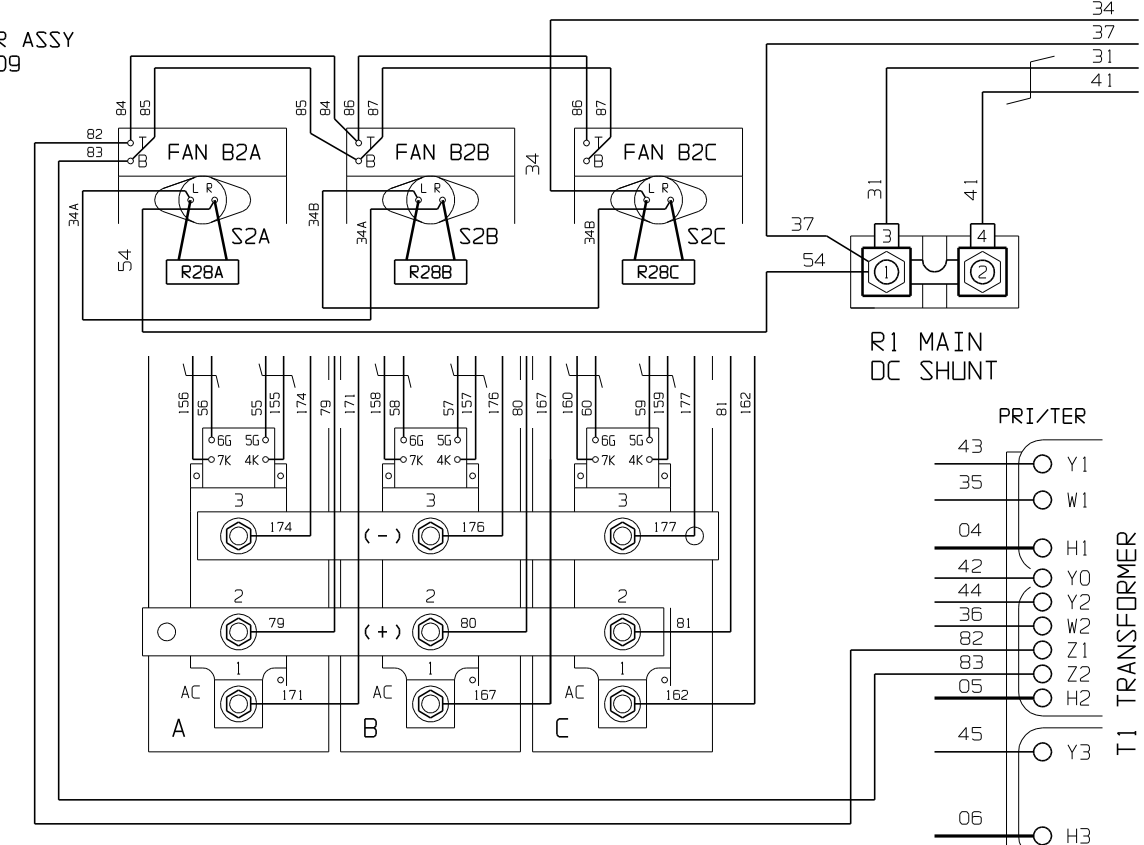


FIGURE 10
STYLE-163
I/O TERMINAL
BOARD (TB1)

FIGURE 7
400A RECTIFIER ASSY
(A16) PM5007-09



- NOTES:
- 1) ALL COMPONENTS ARE CONNECTED WITH FLAME-RETARDANT SWITCHBOARD INSULATION SYSTEM (SIS) TYPE WIRING, IDENTIFIED ON EACH END WITH NUMBER-CODED MARKERS.
 - 2) WHEN REMOTE SENSE IS USED, WIRE #38 CONNECTS TO REMOTE SENSE(-), AND WIRE #40 CONNECTS TO REMOTE SENSE(+).
 - 3) I/O PANELS AND RECTIFIER ASSEMBLIES ARE NOT DRAWN TO SCALE.
 - 4) FOR APPROPRIATE RECTIFIER ASSEMBLY, REFER TO THE SUPPLIED PARTS DATA PACKAGE REPORT AND IDENTIFY THE FACTORY PART NUMBER BY CIRCUIT SYMBOL "A16".
 - 5) FOR APPROPRIATE I/O PANEL LAYOUT, REFER TO THE AT30 USER'S MANUAL TO IDENTIFY ENCLOSURE TYPE (STYLE-5018/5030/163).
 - 6) SEE STANDARD DRAWING (JE5094-00) FOR FULL SIGNAL WIRING FROM DISPLAYED COMPONENTS (A16 & TB1) TO CONTROL COMPONENTS (A15, A17x, R1, R3 & T1).

4	23496	120312	THIRD ANGLE PROJECTION
3	22675	062211	
2	21118	042908	DRAWN BY MCR 013007
1	20932	120107	ELECTRONIC APPROVAL SIGNATURES MAINTAINED BY MFG ECN LOG
0	20529	013007	UNLESS OTHERWISE NOTED DIMENSIONS ARE IN INCHES. TOLERANCES ARE:
REV	ECN No	DATE	

TITLE AT30 SERIES BATTERY CHARGER CONNECTION DETAILS: I/O PANEL & RECTIFIER ASSY (A16)			
DRAWING No		JE5163-00	REV 4
SCALE NTS		PART No JE5163-00	SHEET 1 OF 1
B			