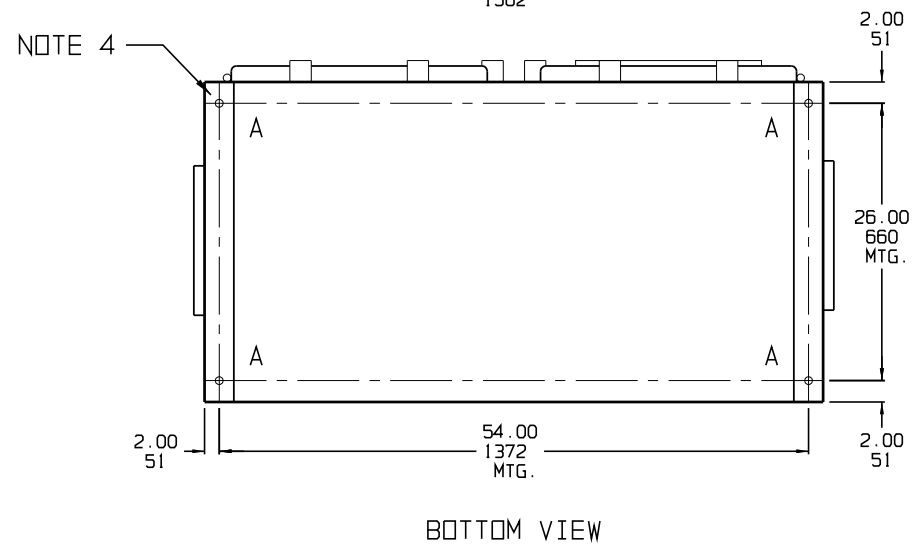
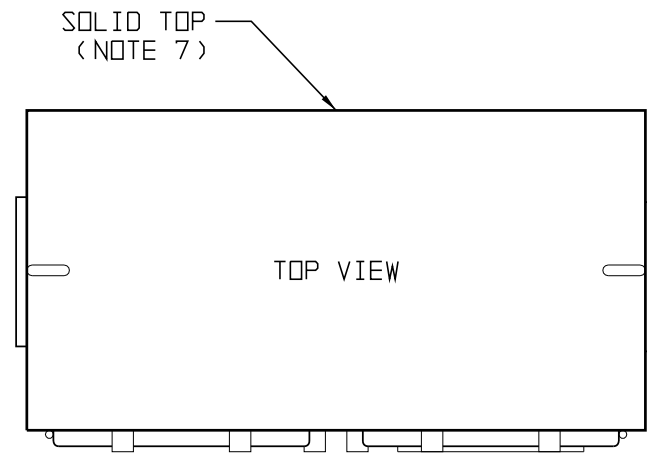
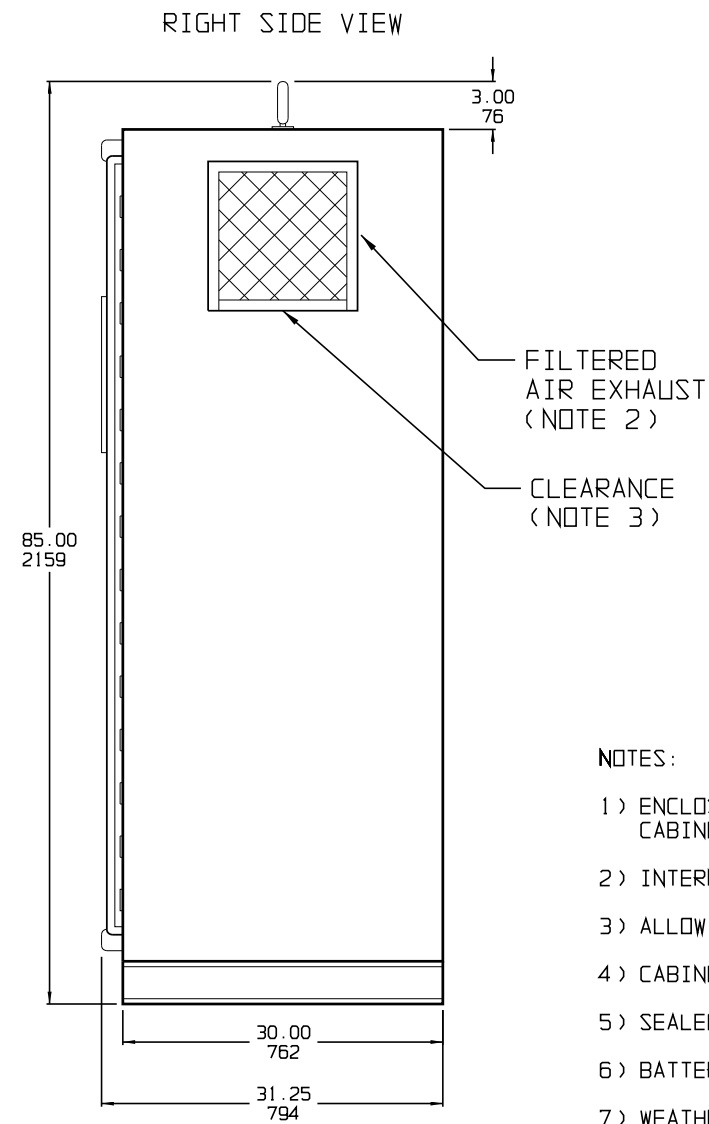
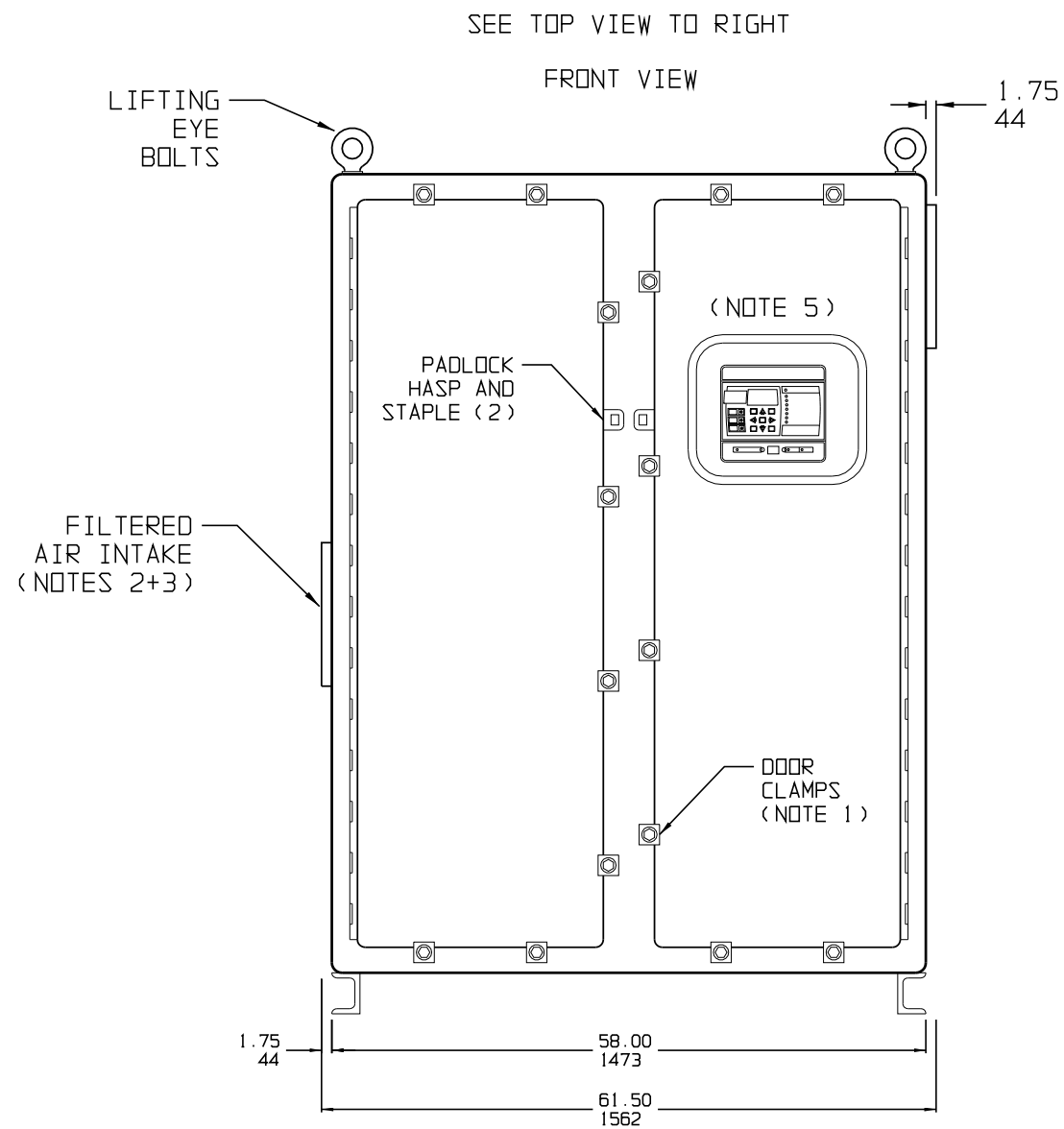


HOLE	DIA.	QTY.	APPLICATION
A	0.625 15.88	4	FLOOR MOUNTING



NOTES:

- ENCLOSURE IS A NEMA TYPE-4 (MEETS NEMA-12/13 SPECS) / IP65 STEEL CABINET WITH A GASKETED DOOR. FINISH IS ANSI-61 GRAY EPOXY POWDERCOAT.
- INTERNALLY POWERED COOLING FANS MOUNTED INSIDE OF CABINET.
- ALLOW 6in/152mm OF FREE AIR ON SIDES OF CABINET FOR VENTILATION.
- CABINET IS FLOOR-MOUNTED AS SHOWN IN TABLE ABOVE.
- SEALED ACRYLIC WINDOW PROVIDED TO VIEW INTERNAL CONTROL PANEL.
- BATTERY CHARGER INSTALLATION WEIGHT: (contact factory for quote)
- WEATHER-PROOF NEMA-4 CABINETS FEATURE NO PRE-FAB PROVISIONS FOR CONDUIT ENTRANCE. CABINET SHOULD BE FIELD-MODIFIED BY INSTALLER AS NEEDED FOR I/O.

DUAL DIMENSIONS in mm

			 THIRD ANGLE PROJECTION					
			DRAWN BY	MCR	101023	TITLE ATevo BATTERY CHARGER OUTLINE: NEMA TYPE-4 VENTED ENCL: FOR ST-198 MODELS		
			ELECTRONIC APPROVAL SIGNATURES MAINTAINED BY MFG ECN LOG			DRAWING No		REV
0	N/A	101023	UNLESS OTHERWISE NOTED DIMENSIONS ARE IN INCHES. TOLERANCES ARE:			JE5199-50		0
REV	ECN No	DATE	SCALE		NTS	PART No		J
						JE5199-50		1
						SHEET		1
						OF		1